

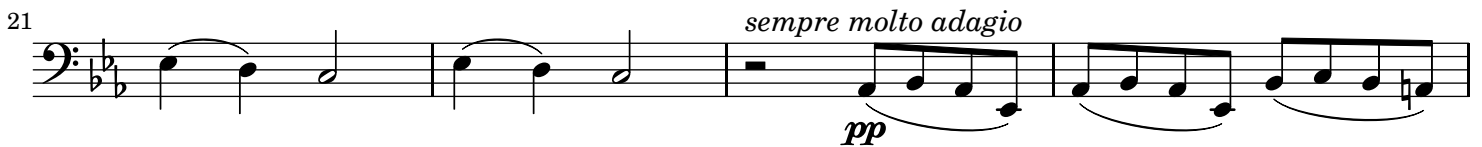
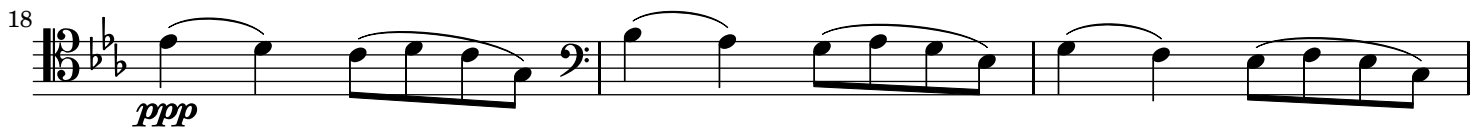
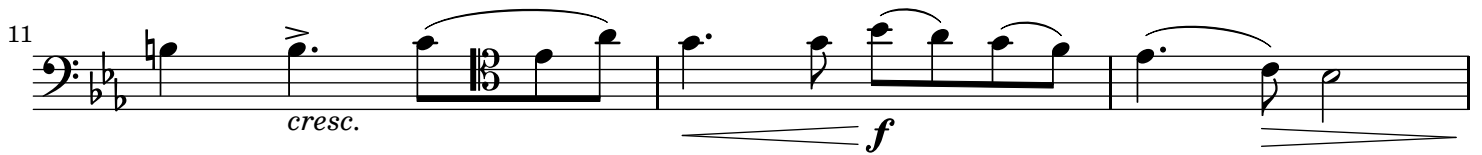
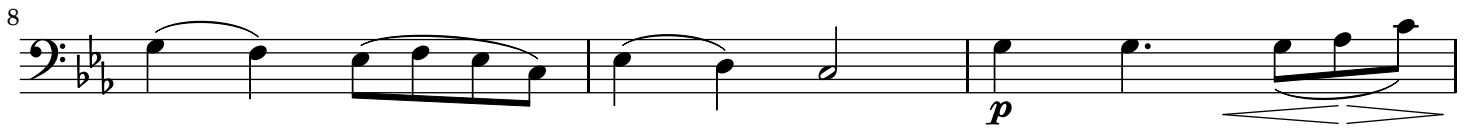
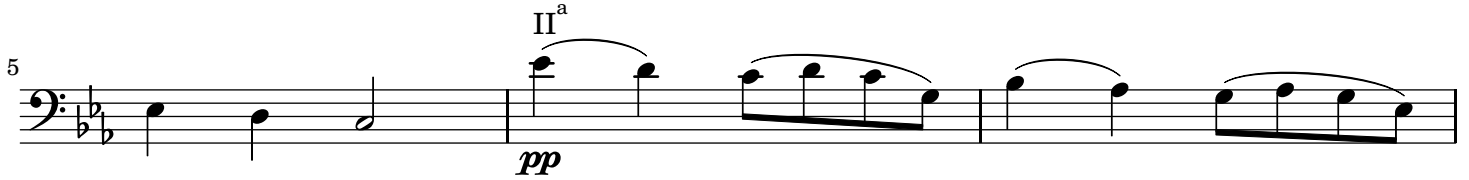
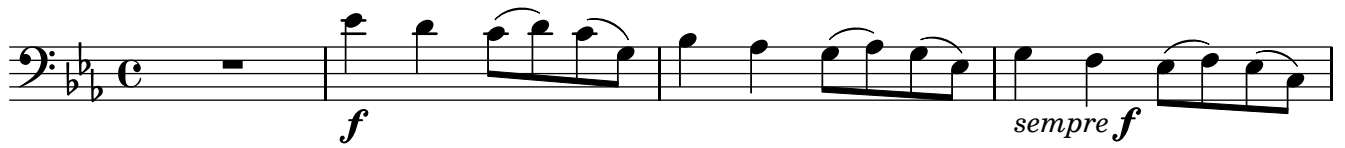
ÉLÉGIE

pour violoncelle et piano, op.24

Gabriel FAURÉ

(1845-1924)

Molto adagio





31  *poco a poco cresc. - -*

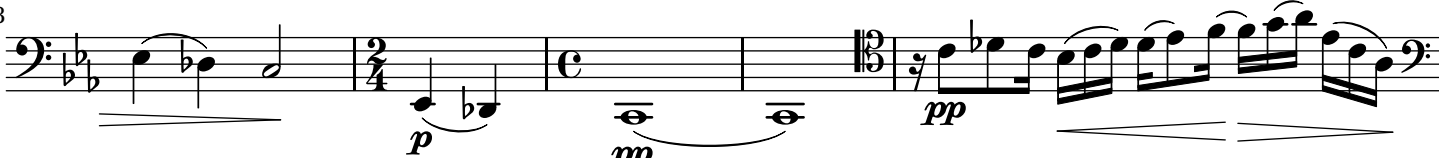
33  *f*

35  *ff* 6 6 6

37 

38  *poco rit*

39 *a tempo*  *ff*

43  *p* *pp* *pp*

48  *sempre dim.*

50  *ppp*