

Suïtte 6me

Transcription en Sol majeur

a Violoncello Solo senza Basso.

pour Alto par Yokoyama Shin-Itchiro

J.S. Bach

Prélude

3

6

9

12

15

18

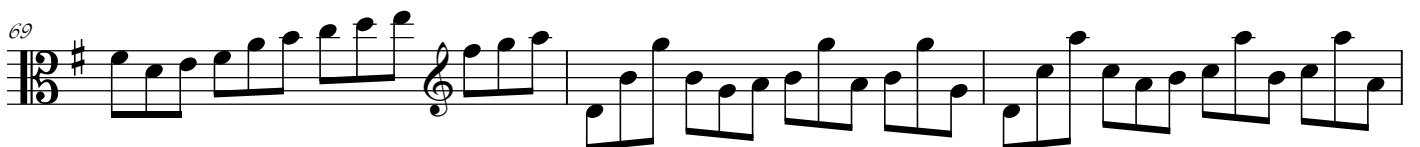
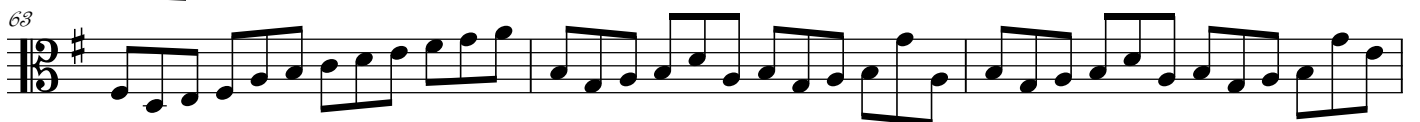
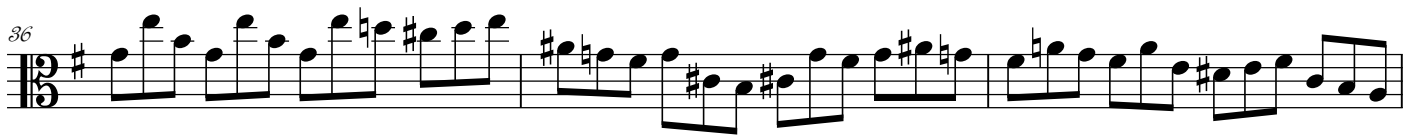
21

24

27

30

Volli Subito



72

75

78

80

83

85

87

89

91

94

96

99

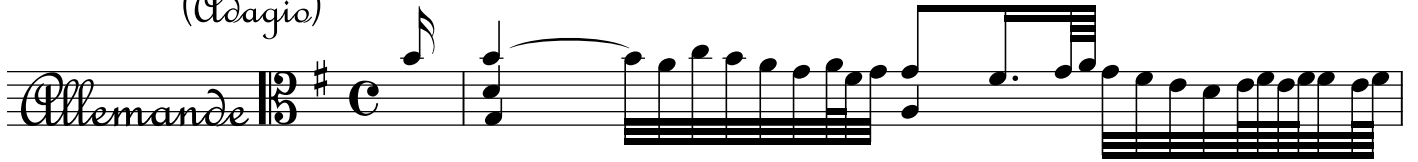
102

ossia

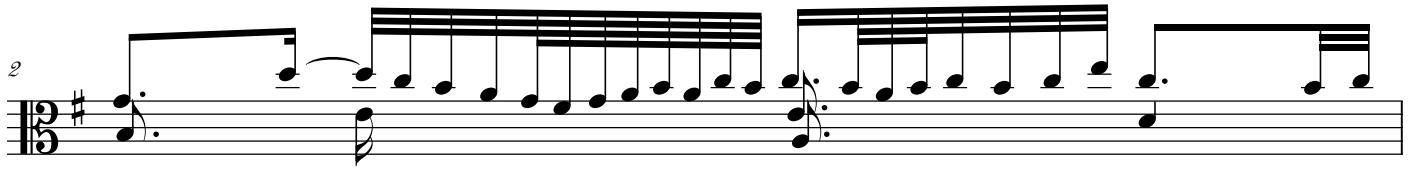
ossia

(Adagio)

Allemande



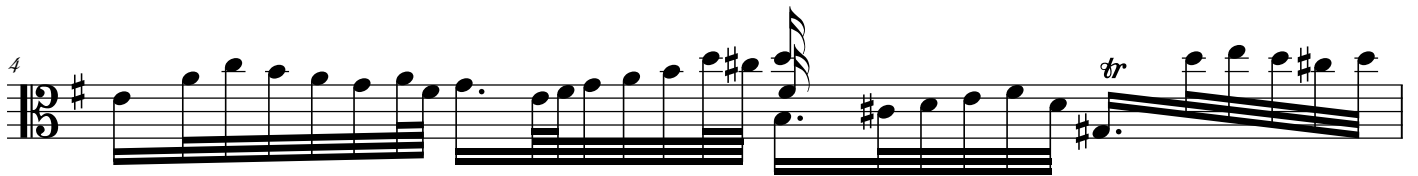
2



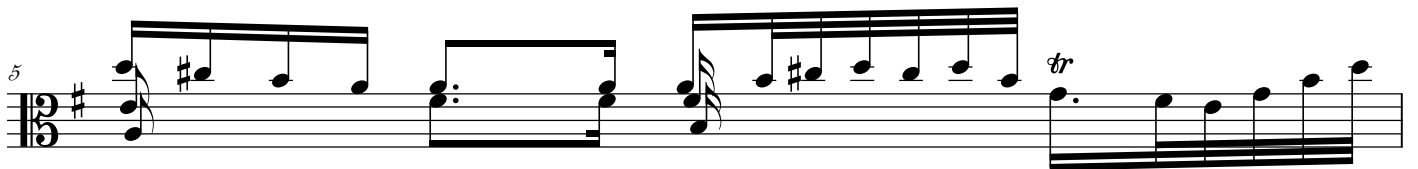
3



4



5



6



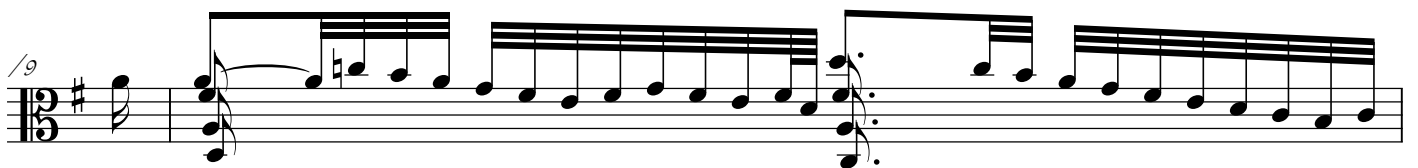
7



8



/9



10



11 *tr*

12

13 *tr*

14 *tr*

15 *tr* *tr*

16

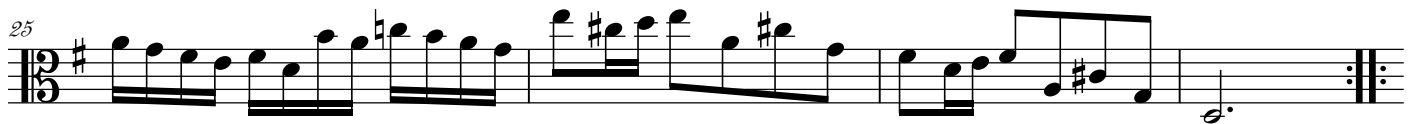
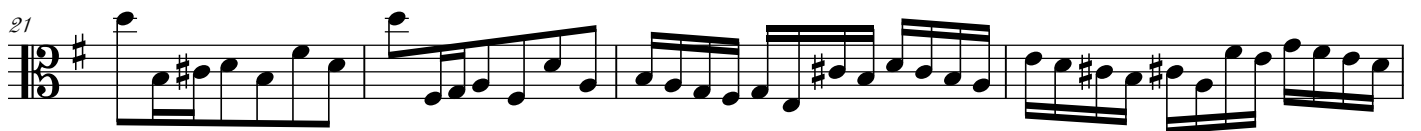
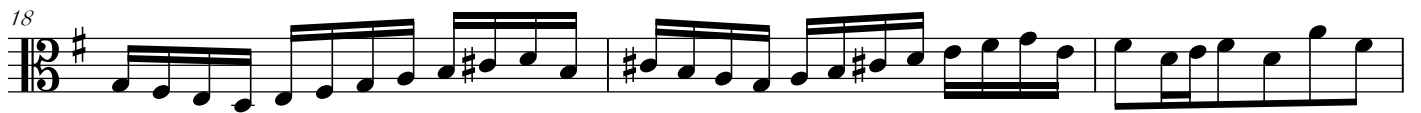
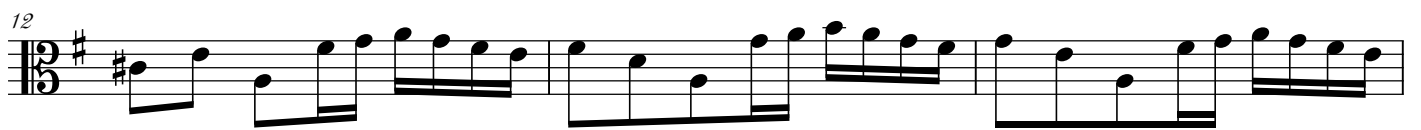
17

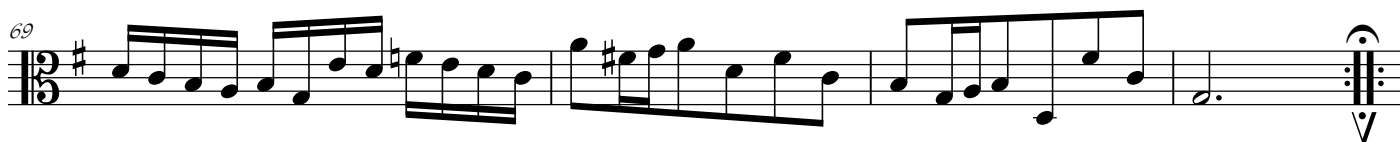
18

19 *8va ad lib.*

20 *tr*

Detailed description: This page contains ten staves of musical notation for a bass clef instrument. The key signature has one sharp (F#). The music consists of a single melodic line. Measures 11-18 feature various rhythmic patterns, including eighth and sixteenth notes, and are marked with trills (*tr*). Measure 19 is marked *8va ad lib.* and features a series of eighth notes. Measure 20 concludes with a trill (*tr*) and a double bar line with repeat dots.





Sarabande 3/8 F\#

5

9

13

17

21

25

29

Gavotte 3/8 F\# C

1^{re}

4

8/

13

17

21

25

Gavotte 2e

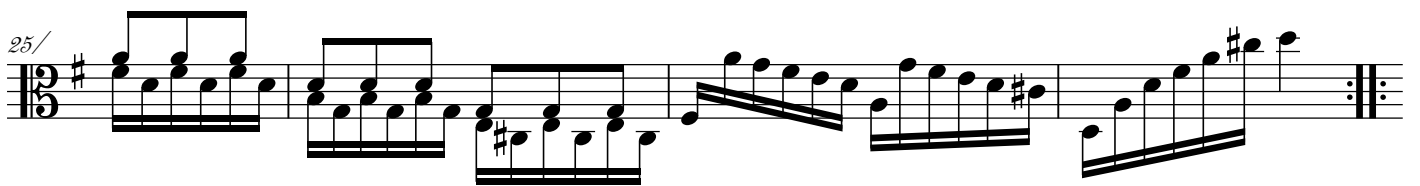
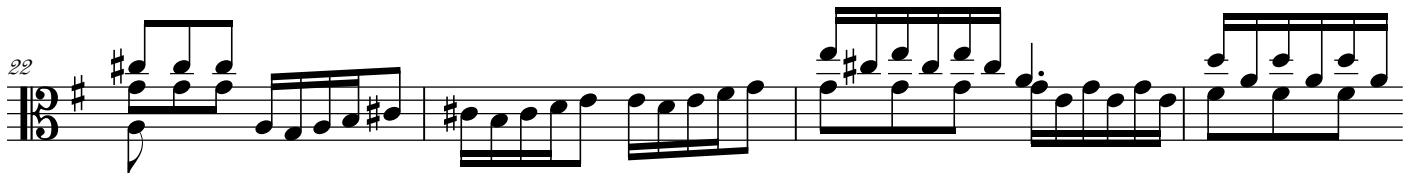
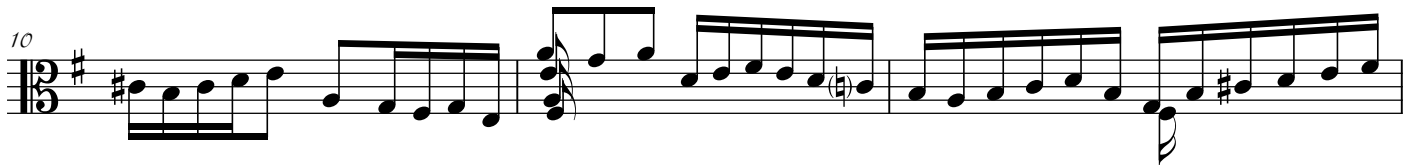
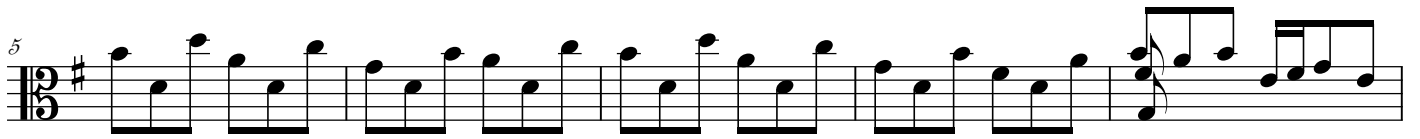
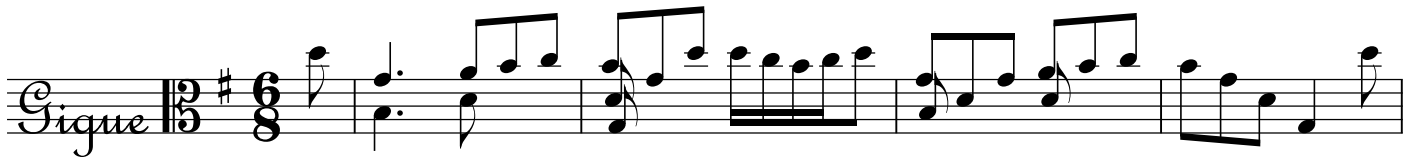
4/

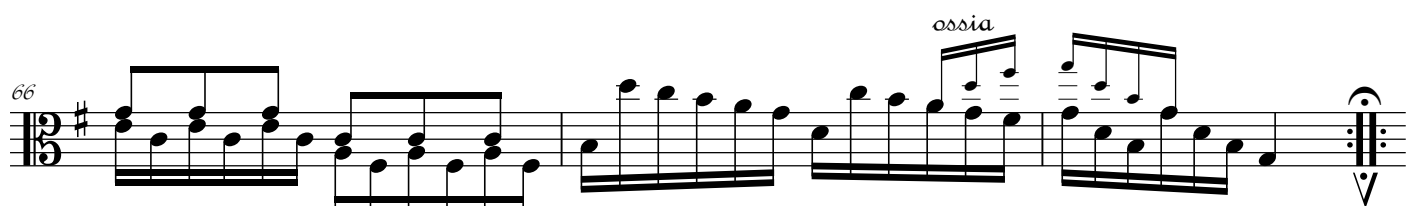
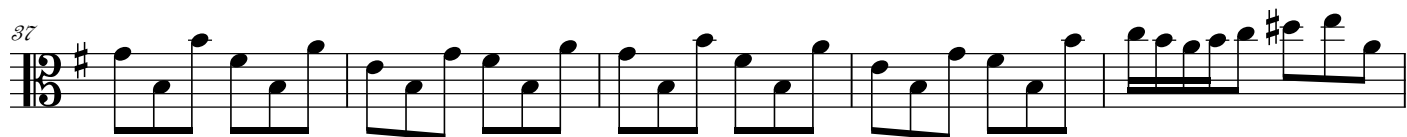
8/

13

17

Gavotte Da
1re *Capo*





La Fin des Suites